

301 West Willow, Harrisburg, SD 1st Generation Office Space for Lease

VANTIS

COMMERCIAL REAL ESTATE ADVISORS

845 SF
\$1100.00 per month
NNN

Executive Office Suites
\$500 - \$550 per month
Gross



Property Details:

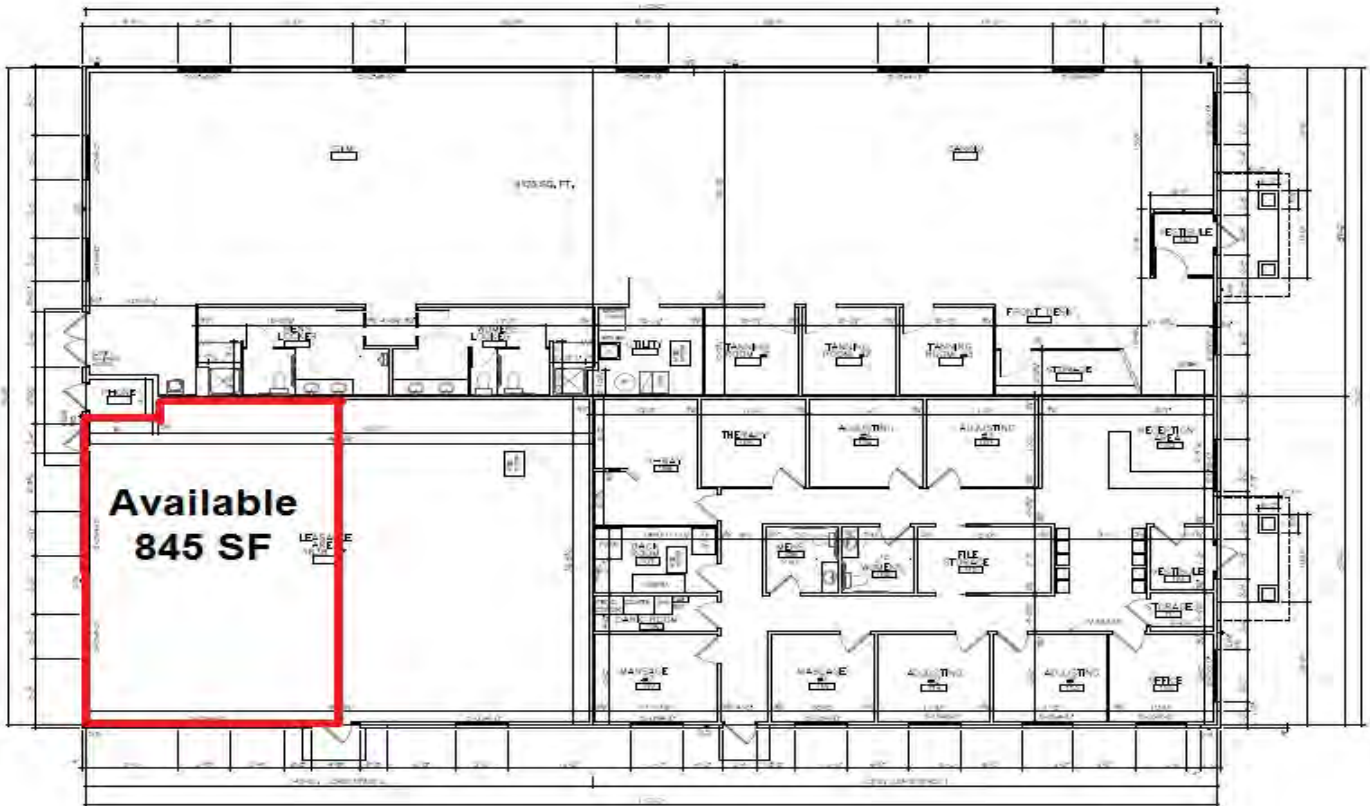
- Excellent location in the heart of Harrisburg
- Located on Willow near the corner of Cliff Avenue and Willow (Hwy 110)
- Tenants include Harrisburg Family Chiropractic and Prairie Rehabilitation
- Located in the same lot as BP Gas and Convenience Station, accross from Fareway Grocery
- Lease in entire space or as individual office suites
- Brand new move in ready office
- Low NNN costs
- Surrounding businesses: New Fareway Grocery Store, Neighborhood Dental, Harrisburg Eye Care, Subway, Allen Homes, Avera Harrisburg Medical Clinic, Casey's General Store, and Remarkable Conginment Shop
- Monument digital signage available for tenants use

Amy Ibis, Broker, Associate
605.359.4430
amy@vantiscommercial.com

301 West Willow, Harrisburg SD 1st Generation Office Space for Lease

VANTIS

COMMERCIAL REAL ESTATE ADVISORS

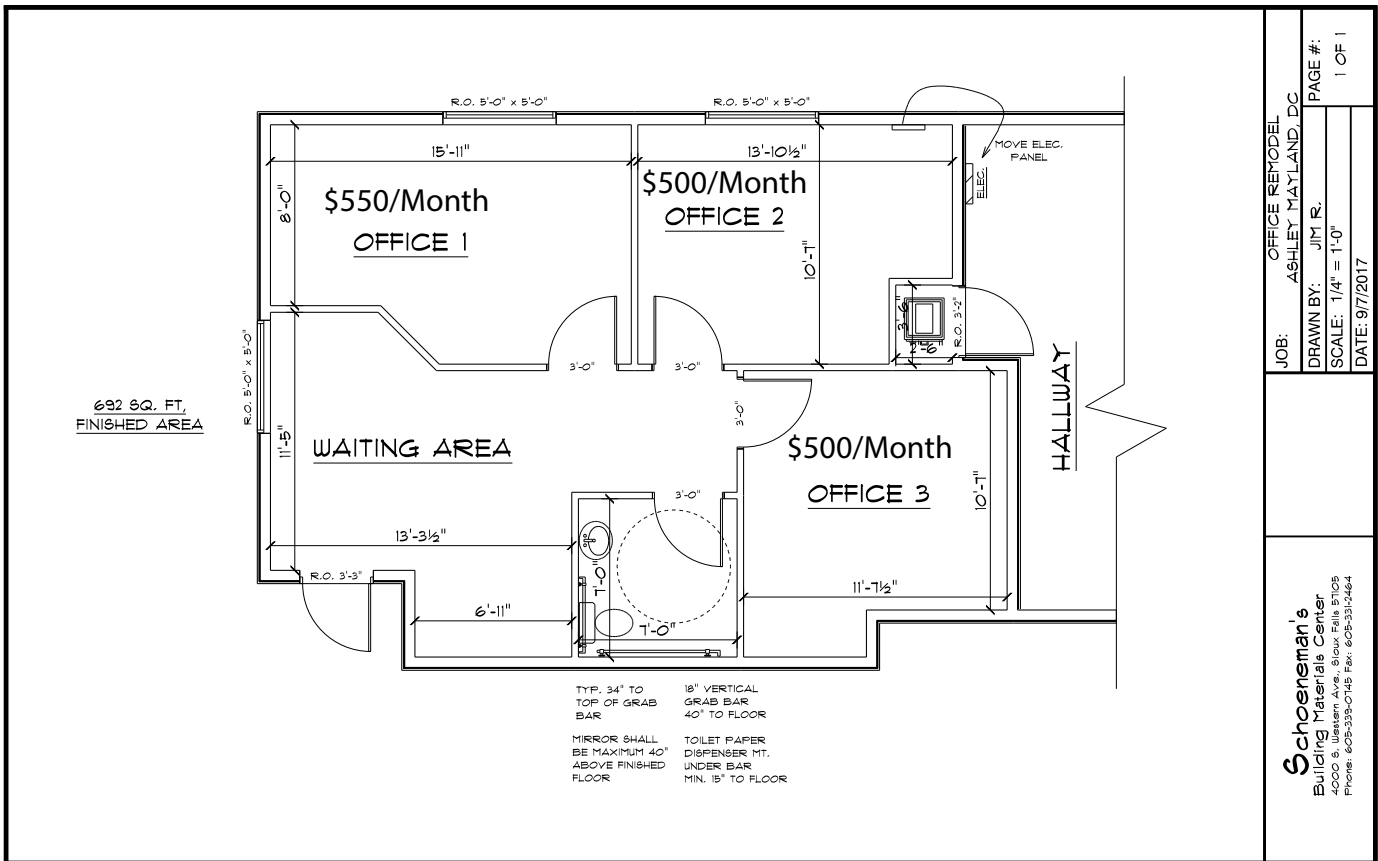


Amy Ibis, Broker, Associate
605.359.4430
amy@vantiscommercial.com

301 West Willow, Harrisburg SD Office Space for Lease

VANTIS

COMMERCIAL REAL ESTATE ADVISORS



845 SF
\$1100.00 per month
NNN

Executive Office Suites
\$500.00 - \$550.00 per month
Gross