

Pierre Development Land for Sale VANTIS

COMMERCIAL REAL ESTATE ADVISORS



Property Details:

Size: 18 Acres

Price: \$4.30 PSF

Location: Highway 83 By-Pass

Highlights:

- Highly visible location in Pierre, South Dakota's newest and fastest growth sectors to date
- Allows for 2 access approaches
- 776 feet of Highway frontage
- High traffic counts on 4,500 +/- VPD
- Perfect location for Hotel, Retailers, Restaurants, Fast Food, Grocery, Car Dealership, etc.
- Other area retailers include Menards, Hobby Lobby, Goodwill, Farm Credit Services of America, First National Bank, Black Hills Federal Credit Union, O'Reilly Auto Parts, Chevrolet Dealership, Kubota/Bobcat Dealership, and Walmart
- Recent new developments include new elementary school and housing

Scott Van Ginkel, Broker
605.351.7907
scott@vantiscommercial.com

Amy Ibis, Broker, Associate
605.359.4430
amy@vantiscommercial.com

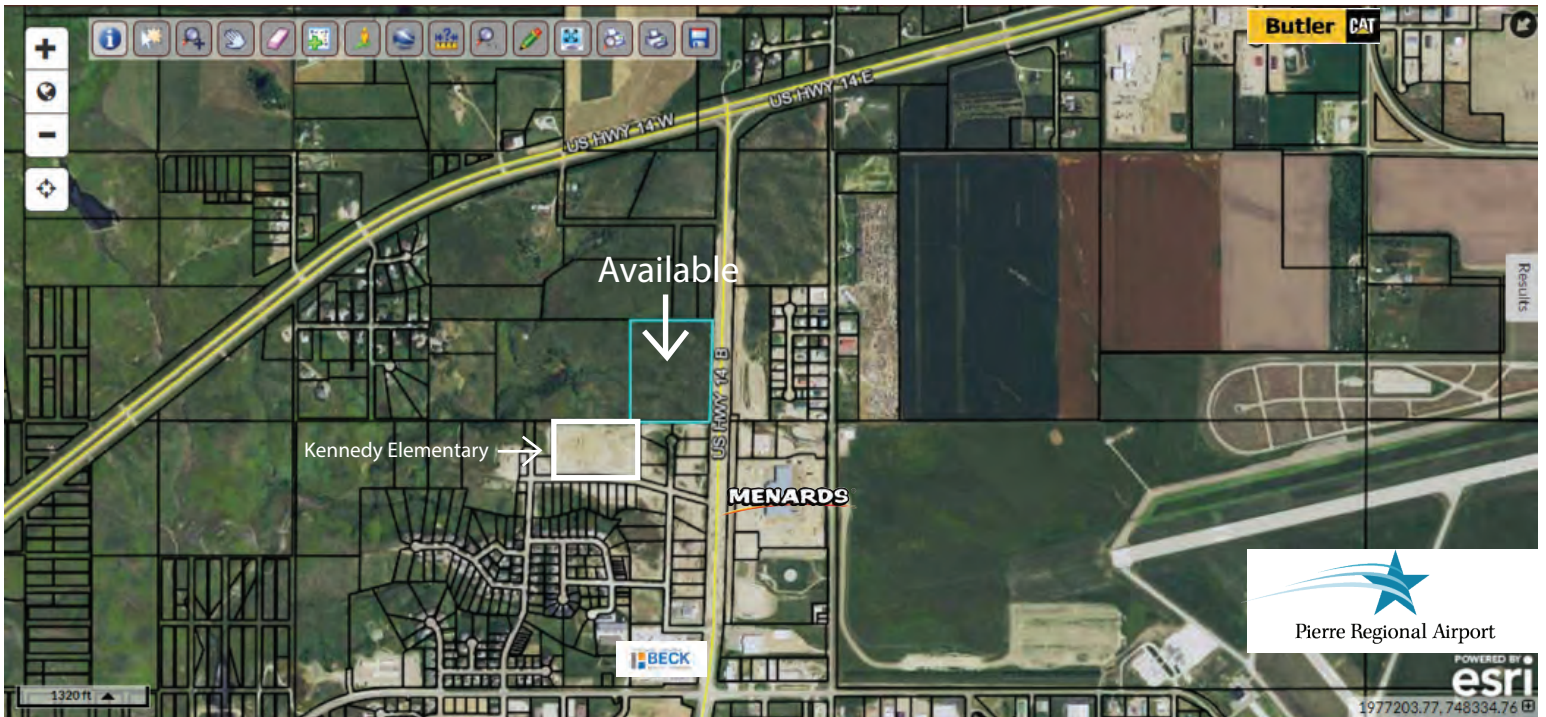


Co-Listed with Todd Schuetzle

<http://dakotalandco.com/properties-for-sale/pierre-development-land/>

Pierre Development Land for Sale VANTIS

COMMERCIAL REAL ESTATE ADVISORS



Scott Van Ginkel, Broker
605.351.7907
scott@vantiscommercial.com

Amy Ibis, Broker, Associate
605.359.4430
amy@vantiscommercial.com



Co-Listed with Todd Schuetzle

<http://dakotalandco.com/properties-for-sale/pierre-development-land/>

4001 W. Valhalla Blvd #206 • Sioux Falls, SD 57106 • 605.215.0940 • www.vantiscommercial.com