

VANTIS

COMMERCIAL REAL ESTATE

Tea Industrial Park Building for Lease

27065 Mueller Place,
Tea, SD 57068

OFFERING MEMORANDUM

Scott Van Ginkel
Broker
(605)-351-7907
scott@vantiscommercial.com

Madison Hulscher
Broker Associate
(605)-520-6365
madison@vantiscomemrcial.com

For Lease

Tea Industrial Park Building for Lease

27065 Mueller Place,
Tea, SD 57068

Highlights

Lease Rate: \$6.50 PSF, NNN
Estimated NNN: \$2.00
Lawn & Snow contracted and paid directly by Tenant

Property Details

- 7,700 SF total building
- 1,056 SF office with mezzanine storage above
- Light Industrial
- Reception, executive office, and conference room
- 3 phase power
- One truck high dock door
- One 10' x 12' grade level door
- Located within blocks of Tea exit 73
- Convenient access to I-29 and soon to be constructed Hwy 100



VANTIS

Scott Van Ginkel
Broker
(605)-351-7907
scott@vantiscommercial.com

Madison Hulscher
Broker Associate
(605)-520-6365
madison@vantiscomemrcial.com

Tea Industrial Park Building for Lease

27065 Mueller Place,

Tea, SD 57068

Property Photos



VANTIS

Scott Van Ginkel
Broker
(605)-351-7907
scott@vantiscommercial.com

Madison Hulscher
Broker Associate
(605)-520-6365
madison@vantiscomemrcial.com

Site Plan

Tea Industrial Park Building for Lease

27065 Mueller Place,
Tea, SD 57068



Scott Van Ginkel
Broker
(605)-351-7907
scott@vantiscommercial.com

Madison Hulscher
Broker Associate
(605)-520-6365
madison@vantiscomemrcial.com

Aerial Photo

Tea Industrial Park Building for Lease

27065 Mueller Place,
Tea, SD 57068



TALLGRASS AVE

INTERSTATE
29

271ST STREET

INTERSTATE
29

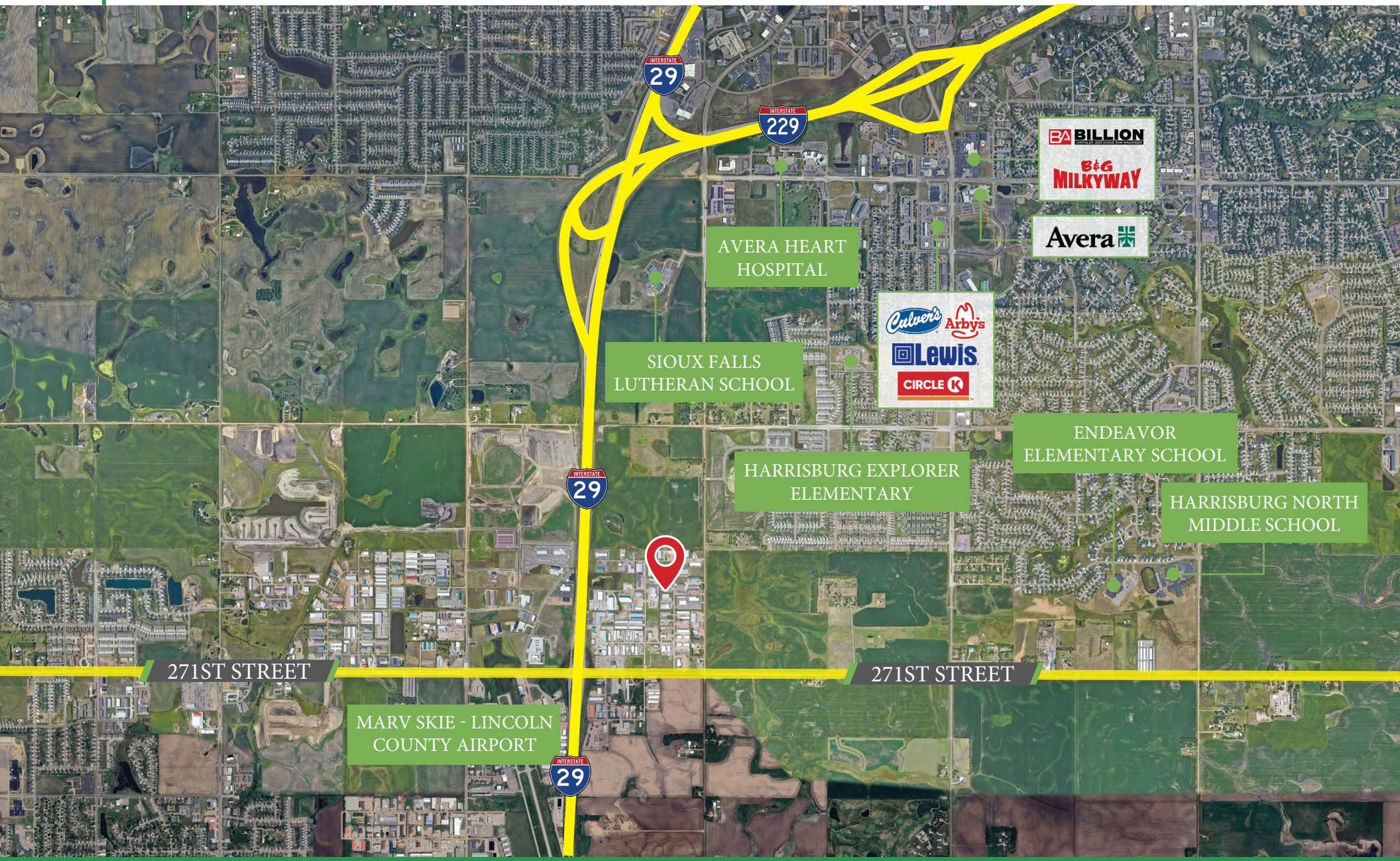


VANTIS

Scott Van Ginkel
Broker
(605)-351-7907
scott@vantiscommercial.com

Madison Hulscher
Broker Associate
(605)-520-6365
madison@vantiscomemrcial.com

Market Overview Map



Scott Van Ginkel
Broker
(605)-351-7907
scott@vantiscommercial.com

Madison Hulscher
Broker Associate
(605)-520-6365
madison@vantiscomemrcial.com