



VANTIS

COMMERCIAL REAL ESTATE

POTENTIAL ROAD FOR SUBDIVISION

I-29 Industrial Land For Sale

TBD 276th Street
Lennox, SD

OFFERING MEMORANDUM

Scott Van Ginkel
Broker
605.351.7907
scott@vantiscommercial.com

Amy Ibis
Broker Associate
605.359.4430
amy@vantiscommercial.com

For Sale

I-29 Industrial Land for Sale

TBD 276th Street
Lennox, SD

Property Details

Property Size: 8 Acres
Sub-dividable to 2 acre parcels
PSF: \$5.50 PSF
Zoning: Industrial

Highlights

- Industrial land located on northwest corner of intersection I-29 and 276th Street, Exit 68
- Excellent opportunity for industrial owner/user and industrial developer
- Rough grade complete
- Located within minutes of Sioux Falls
- Close proximity to surrounding communities including Tea, Harrisburg, Worthing, Lennox, and Canton exit.
- Lincoln County rural water
- SE Electric
- Septic waste
- "Starlink" ready



VANTIS

Scott Van Ginkel
Broker
605.351.7907
scott@vantiscommercial.com

Amy Ibis
Broker Associate
605.359.4430
amy@vantiscommercial.com

Aerial Photo

I-29 Industrial Land for Sale

TBD 276th Street

Lennox, SD



276TH STREET

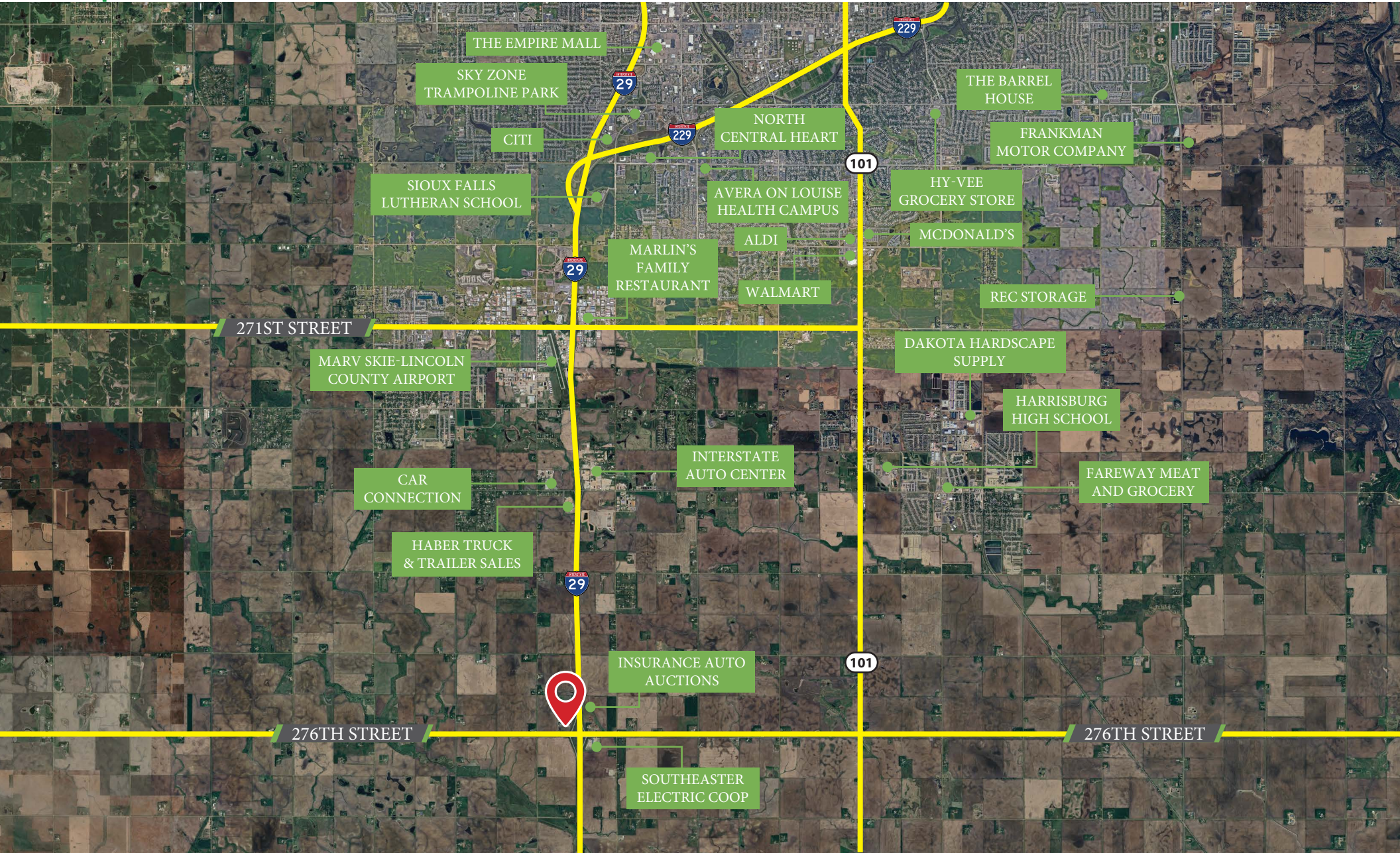
276TH STREET

VANTIS

Scott Van Ginkel
Broker
605.351.7907
scott@vantiscommercial.com

Amy Ibis
Broker Associate
605.359.4430
amy@vantiscommercial.com

Market Overview Map



Scott Van Ginkel
Broker
605.351.7907
scott@vantiscommercial.com

Amy Ibis
Broker Associate
605.359.4430
amy@vantiscommercial.com



VANTIS

COMMERCIAL REAL ESTATE

I-29 Industrial Land For Sale

TBD 276th Street, Lennox, SD

POTENTIAL ROAD FOR SUBDIVISION

OFFERING MEMORANDUM

Scott Van Ginkel
Broker
605.351.7907
scott@vantiscommercial.com

Amy Ibis
Broker Associate
605.359.4430
amy@vantiscommercial.com