



VANTIS

COMMERCIAL REAL ESTATE



**AVAILABLE
NOW**

Office Space For Lease

47137 Wetland Road, Suite 100

Harrisburg, SD 57032

OFFERING MEMORANDUM

Craig Hagen, CCIM, SIOR
605.310.4227
craig@vantiscommercial.com

For Lease

Office Space For Lease

47137 Wetland Road, Suite 100
Harrisburg, SD 57032

Property Details

Suite 100

Price: \$1,750 per month gross

Size: 1,910 SF

Features:

- Office space includes:
 - Reception
 - Conference Room
 - 2 Offices
 - Breakroom
 - Restroom
- Main level – 1,102 SF
- Upper Level – 808 SF
- All utilities included
- Easy access to I-29
- Located west of Harrisburg, on Highway 110, minutes from Sioux Falls.
- Neighbors include: Nielson Construction, MH Equipment, Seal Pros Asphalt Paving, Snapfon, RV & Boat Storage, Select Painting, Select Companies, and Frankman Auto Body.



VANTIS

Craig Hagen, CCIM, SIOR
605.310.4227
craig@vantiscommercial.com

Property Photos

Office Space For Lease

47137 Wetland Road, Suite 100
Harrisburg, SD 57032



Upper Level Area



Upper Level Area



Main Floor Office



Main Floor Office

VANTIS

Craig Hagen, CCIM, SIOR
605.310.4227
craig@vantiscommercial.com

Property Photos

Office Space For Lease

47137 Wetland Road, Suite 100
Harrisburg, SD 57032



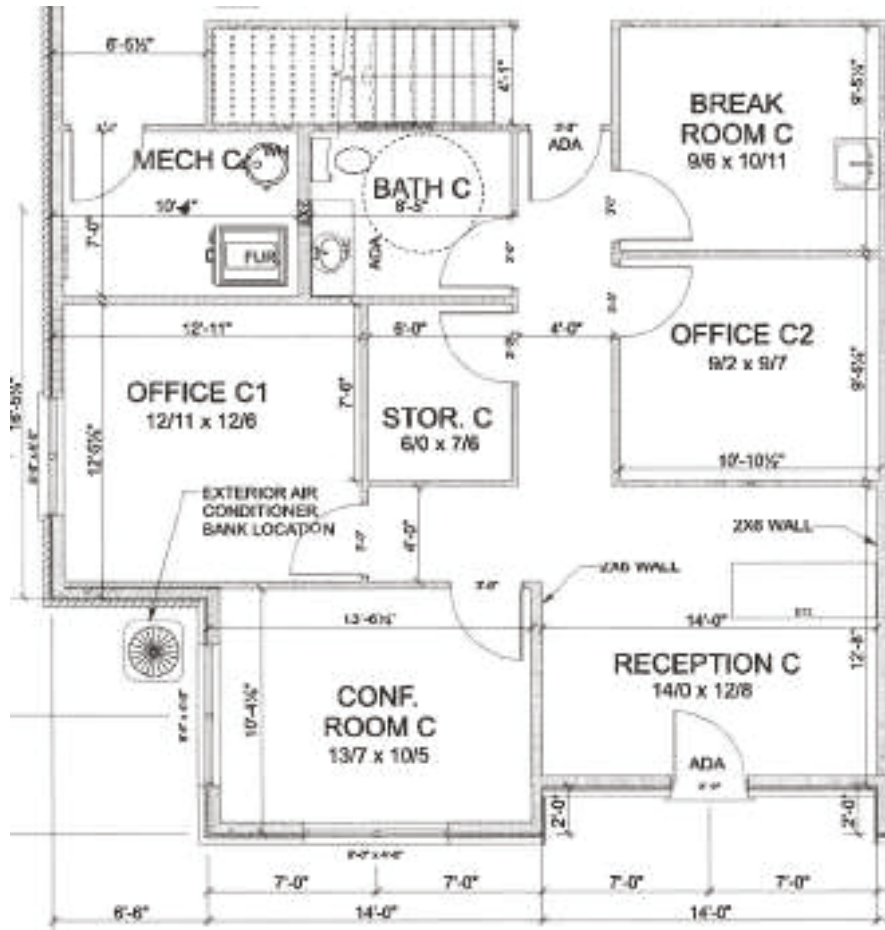
VANTIS

Craig Hagen, CCIM, SIOR
605.310.4227
craig@vantiscommercial.com

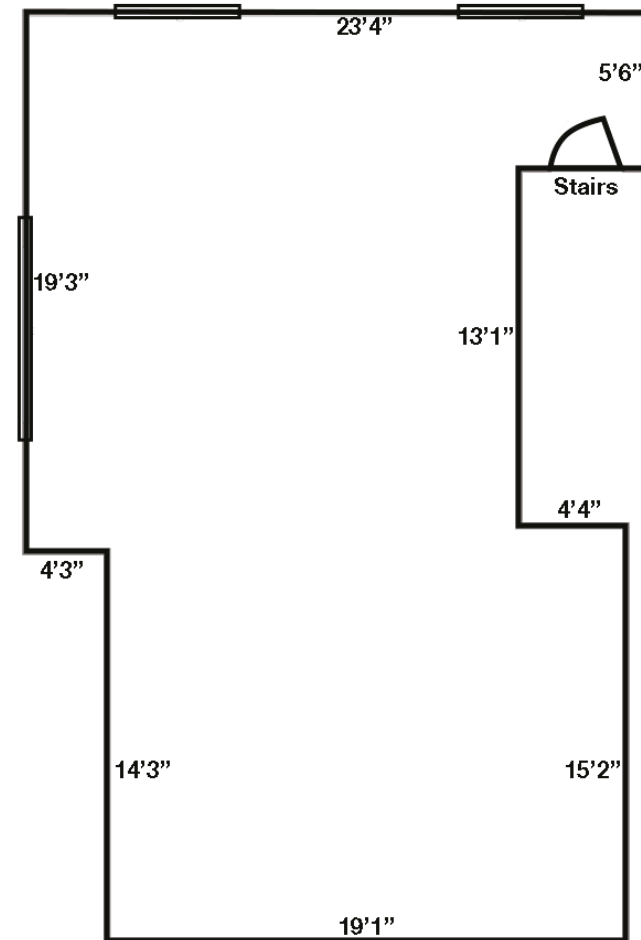
Floor Plans

Office Space For Lease

47137 Wetland Road, Suite 100
Harrisburg, SD 57032



Main Floor



Upper Level Area

VANTIS

Craig Hagen, CCIM, SIOR
605.310.4227
craig@vantiscommercial.com

Aerial
Photo

Office Space For Lease

47137 Wetland Road, Suite 100

Harrisburg, SD 57032

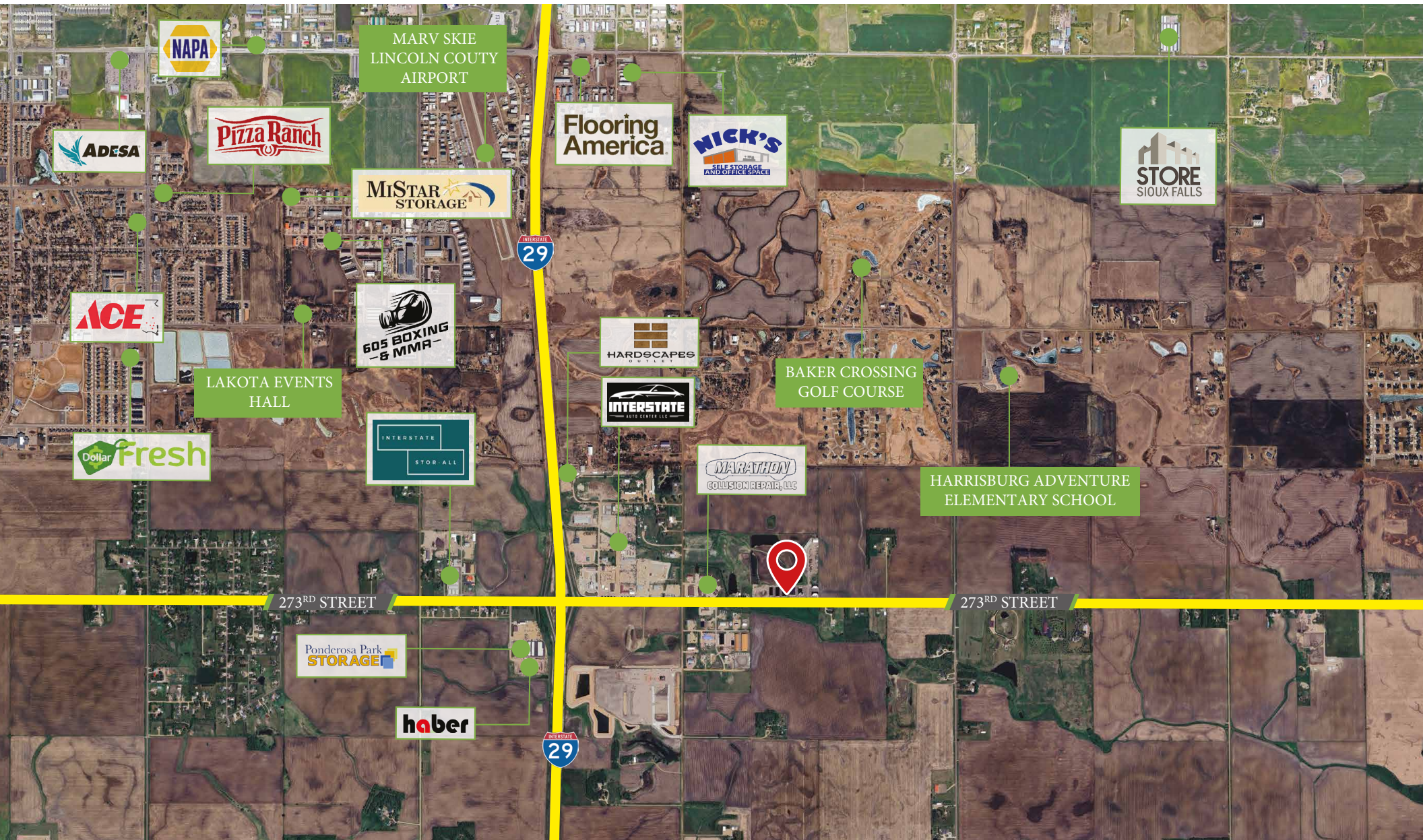
273RD STREET



VANTIS

Craig Hagen, CCIM, SIOR
605.310.4227
craig@vantiscommercial.com

Market Overview Map



VANTIS

Craig Hagen, CCIM, SIOR
605.310.4227
craig@vantiscommercial.com