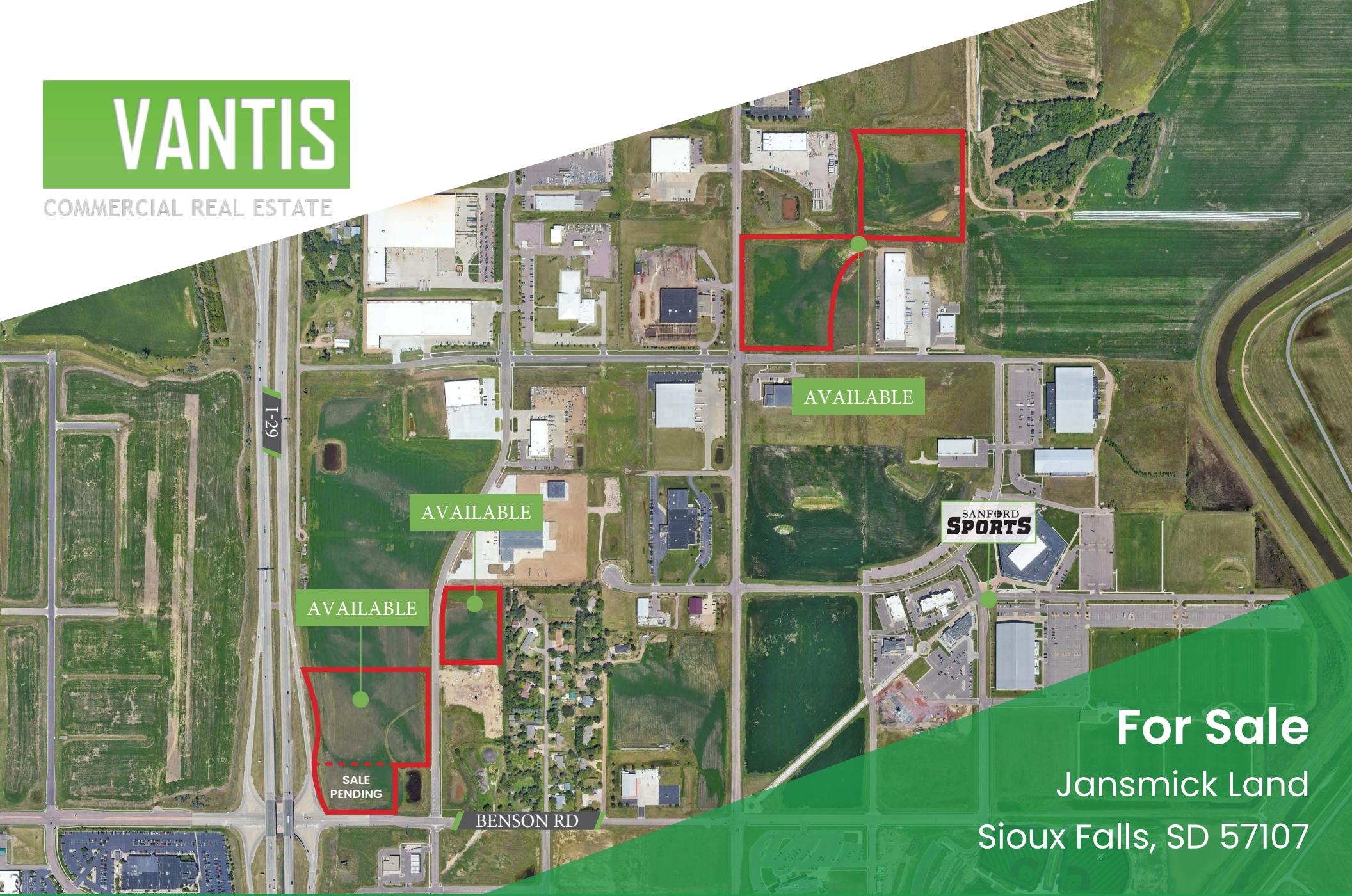




COMMERCIAL REAL ESTATE



For Sale
Jansmick Land
Sioux Falls, SD 57107

OFFERING MEMORANDUM

Craig Hagen, CCIM, SIOR
Broker Associate
605.310.4227
craig@vantiscommercial.com

For Sale

Property Details

Size: Varies, see next page
Zoned: C-4, O, and I-1
Price: Contact broker for pricing

Property Highlights

- Located just off I-29 with convenient access to Benson Road and 60th Street
- Some parcels adjacent to interstate for excellent visibility
- Subdividable
- Located in an Opportunity Zone
- Area neighbors include Culver's, Fleet Farm, Scooter's Coffee, TEC Equipment, P&M Steel, Harley-Davidson, the Sanford Sports Complex, and more
- One or more owners is an SD licensed Real Estate Agent



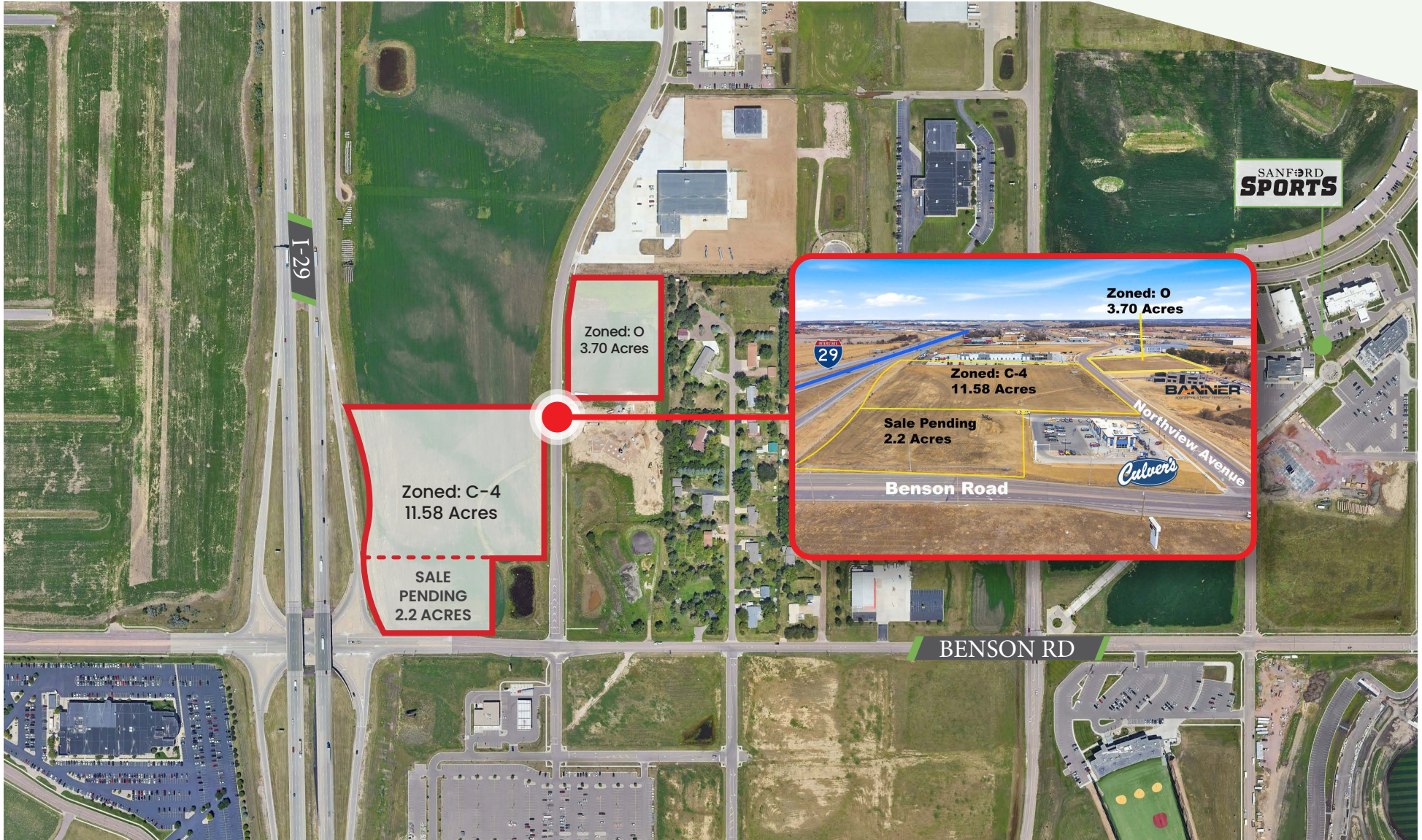
For Sale
Jansmick Land
Sioux Falls, SD 57107

VANTIS

Craig Hagen, CCIM, SIOR
Broker Associate
605.310.4227
craig@vantiscommercial.com

Parcels

For Sale
Jansmick Land
Sioux Falls, SD 57107



Craig Hagen, CCIM, SIOR
Broker Associate
605.310.4227
craig@vantiscommercial.com

Parcels

For Sale
Jansmick Land
Sioux Falls, SD 57107



Craig Hagen, CCIM, SIOR
Broker Associate
605.310.4227
craig@vantiscommercial.com

Market Overview Map



Craig Hagen, CCIM, SIOR
 Broker Associate
 605.310.4227
 craig@vantiscommercial.com